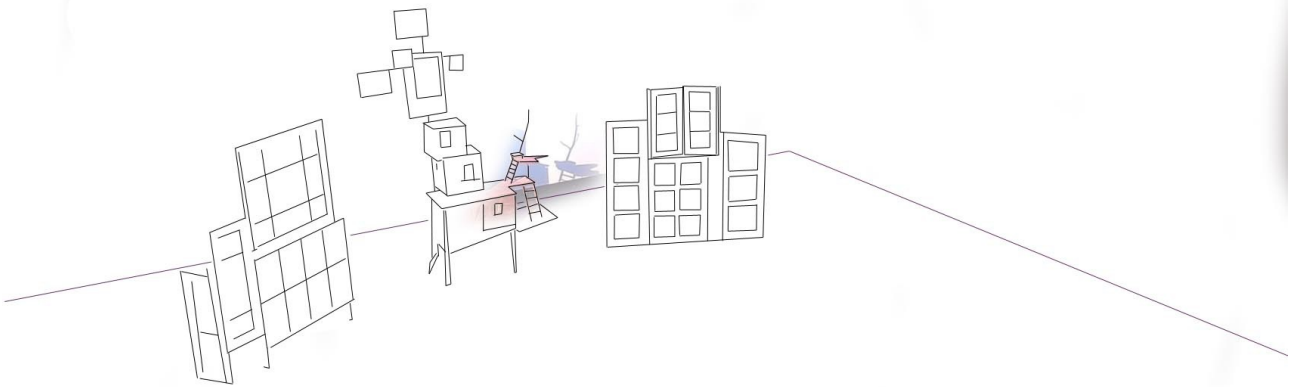


CORAÇÕES RASGADOS

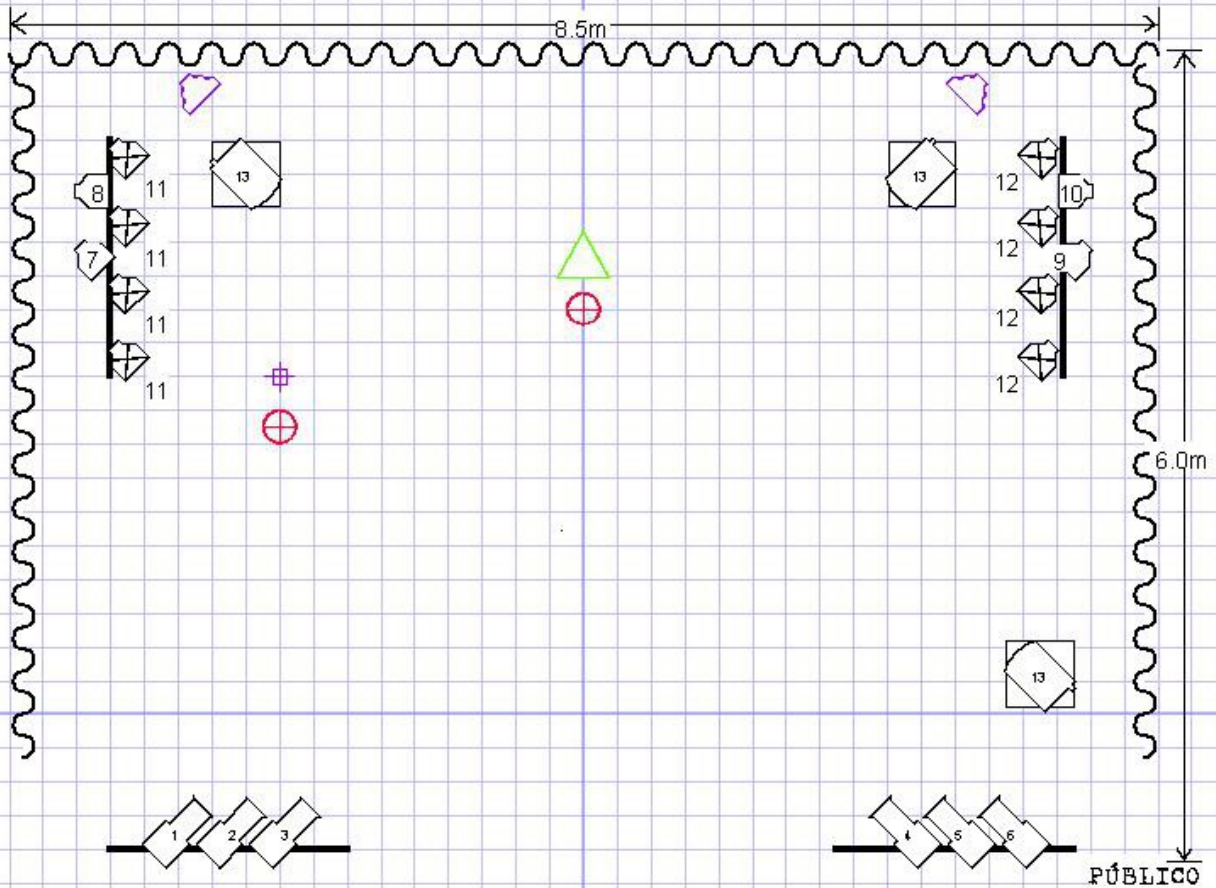
TEATRO E MARIONETAS DE MANDRÁGORA



- desenho de luz -

- PLANTAS TÉCNICAS -

CORACÕES RASGADOS
PLANTA TÉCNICA (ADAPTAÇÃO LED)




ILUMINAÇÃO:



-  02x LIGHTMAX CLS1
-  03x MINI- PAR
-  06x CAMEO TS60WW
-  04x STAIRVILLE FLOODPANEL150

* consola de iluminação da companhia

ENERGIA:


-  02x 220v ficha shuko fêmea

ÁUDIO:

-  02x MONITORES (1 mistura)
-  01x DI
- 01x mic. headset s/ fios
- 01x mic. Shure sm58
- 01x tripé mic. girafa grande
- 02x ligação 'mini-jack' (mesa)

* mesa de mistura, mínimo 3 canais

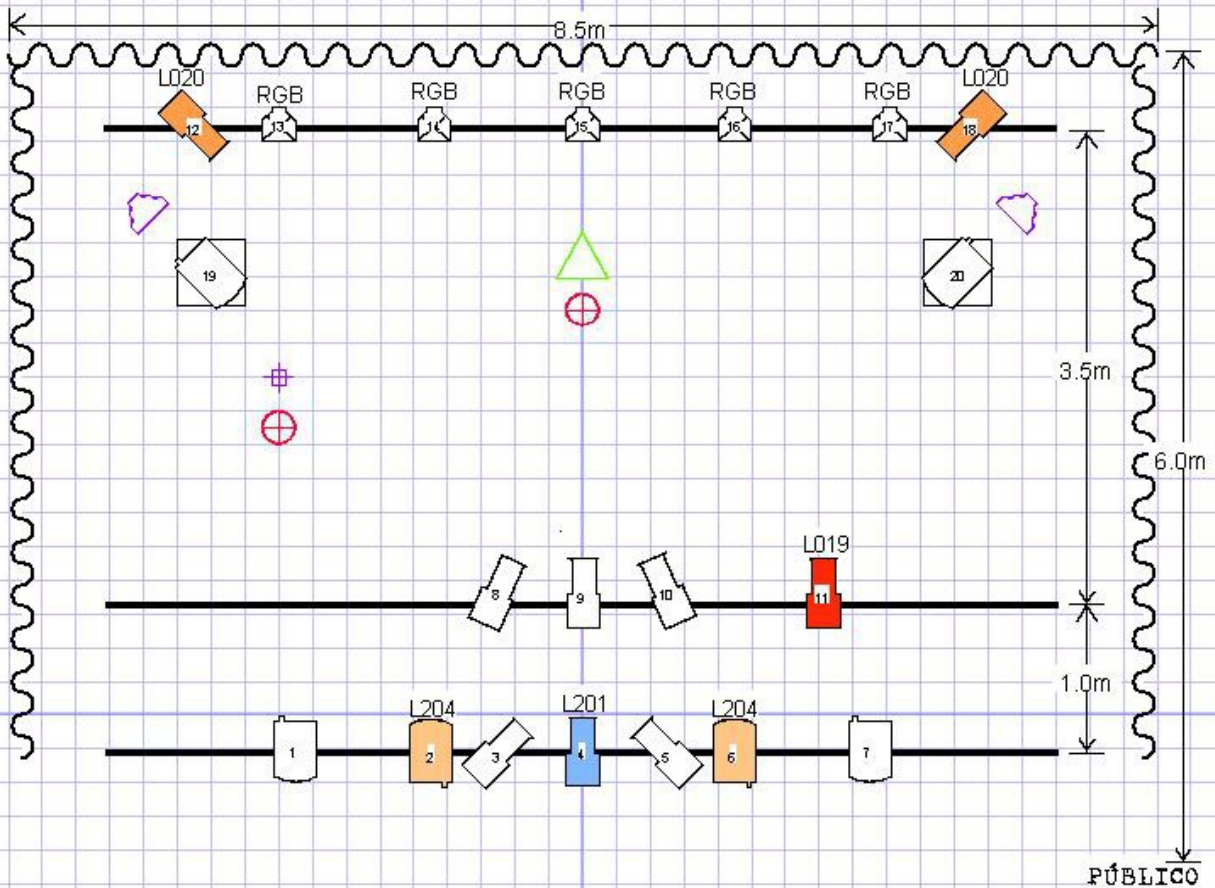
VÍDEO:

-  01x ligação HDMI

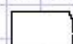
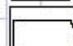
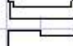

FEV.2022

Teatro e Marionetas de Mandrágora

CORACÕES RASGADOS
PLANTA TÉCNICA (TEATROS)




ILUMINAÇÃO:

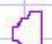

-  04x PC c/ palas
-  02x PC c/ palas, em base de chão
-  09x RECORTE
-  05x PAR LED RGB - DMX512

* consola de iluminação da companhia


ENERGIA:

-  02x 220v ficha shuko fêmea

ÁUDIO:

-  02x MONITORES (1 mistura)
-  01x DI
- 01x mic. headset s/ fios
- 01x mic. Shure sm58
- 01x tripé mic. girafa grande
- 02x ligação 'mini-jack' (mesa)
- * mesa de mistura, mínimo 6 canais
- * Sistema de som adequado ao espaço

VÍDEO:

-  01x ligação HDMI

FEV.2022

Teatro e Marionetas de Mandrágora

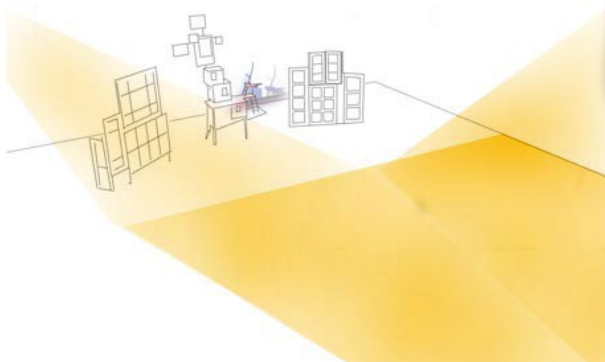
LISTA DE CANAIS:

- 01 - PÚBLICO ESQ.
- 02 - FRENTE ESQ.
- 03 - JANELA SRA. A
- 04 - GERAL APARTAMENTOS
- 05 - JANELA SRA. C
- 06 - FRENTE DTA
- 07 - PÚBLICO DTA.
- 08 - APART. CIMA
- 09 - APART. MEIO
- 10 - APART. BAIXO

- 11 - 'TOMATE'
- 12 - CONTRA JANELA SRA. C
- 13 - CONTRA ESQ.
- 14 - CONTRA APART. ESQ
- 15 - CONTRA CENTRO
- 16 - CONTRA APART. DTA
- 17 - CONTRA DTA.
- 18 - CONTRA JANELA SENHORA A
- 19 - CHÃO ESQ.
- 20 - CHÃO DTA.

AFINAÇÃO:

PÚBLICO | CH [01; 07]



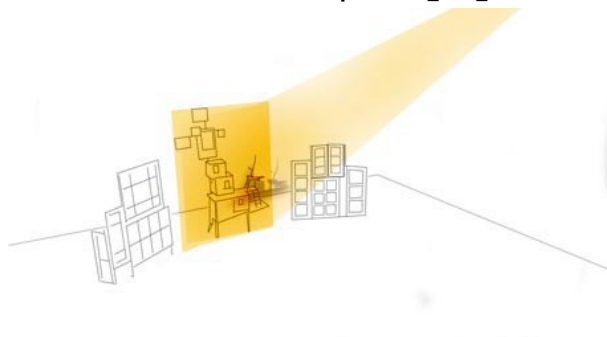
FRENTE | CH [02; 06]



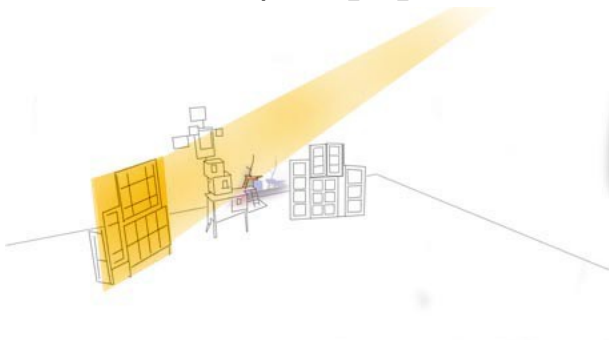
JANELA SRA. A | CH [03]



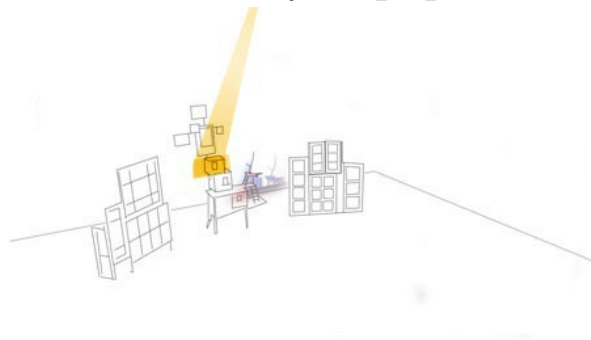
GERAL APARTAMENTOS | CH [04]



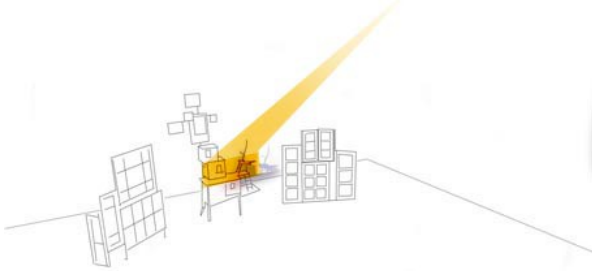
JANELA SRA. C | CH [05]



APARTAMENTO CIMA | CH [08]



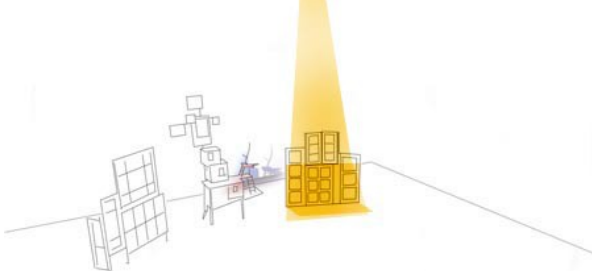
APARTAMENTO MEIO | CH [09]



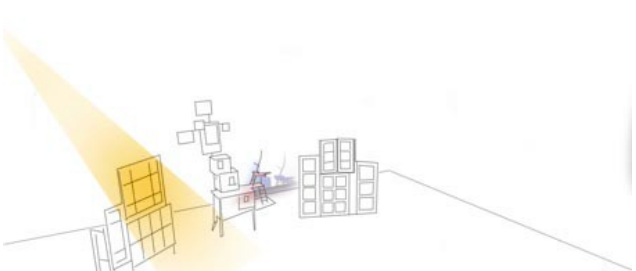
APARTAMENTO BAIXO | CH [10]



TOMATE | CH [11]



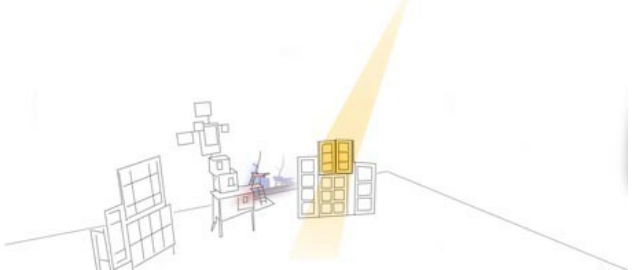
CONTRA JANELA SRA. C | CH [12]



CONTRA APARTAMENTOS | CH [14; 16]



CONTRA JANELA SRA. A | CH [18]



CONTRAS | CH [13; 15; 17]



CHÃO | CH [19; 20]

